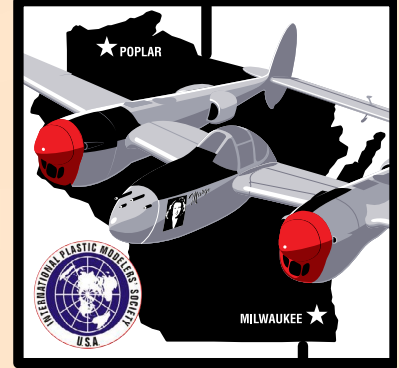


Volume 47
Issue 8

August
2018

RICHARD I. BONG CHAPTER



The Newsletter of Milwaukee, Wisconsin's Richard I. Bong Chapter, International Plastic Modelers Society • USA

Officers:

Editor: Jeff Neal,
N50W15770 Maple Crest Ln,
Menomonee Falls, WI 53051,
262-373-0695,
jneal@mcdilldesign.com

President, Paul Boyer
1969 Lakefield Rd, Cedarburg, WI
53012-9110, 414-531-7026,
airflower2@icloud.com

Secretary: John Plzak
2112 W Kimberly, Milwaukee, WI
53221-5061, 414-282-7808,
jplzak@wi.rr.com

Treasurer: Jim Zeske
8228 S. Forest Meadows Dr.
Franklin, WI 53132-8940,
414-529-5208,
p51bmustang@msn.com

Chapter Contact: Jim Erfert
W169 N8924 Hoyt DR #4,
Menomonee Falls, WI 53051
414-526-7160
jim.erfert@gmail.com

The Wingman newsletter is published
monthly by the R.I. Bong Chapter,
Membership is Free

All contents of the Wingman are for
the enjoyment of the members.
Permission to reprint any material
is not required, but please credit
"IPMS Richard I. Bong Wingman."

Deadline for submissions is 10 days
prior to the next "General meeting".

General Meeting **Friday, August 10** Water Stone Bank 6560 S. 27th Street
Doors open at 7:00 p.m. Meeting starts at 7:30 p.m.

Business Meeting **Wednesday, August 15** at Baker's Square 4900 S. 76th St.,
Meeting begins at 5:30 p.m. • All members are welcome!

Build at the meeting!?

CAN you build at the meeting? I know it seems strange, but we've done it before. So just HOW can you build a model at the meeting? Well, first off, you don't need to finish a model, or even start a model. Just bring in one of your on-going projects and a few tools and paints (no spraying or airbrushing, please), and work a bit on the model. Take the opportunity to let others see how you work and answer questions from other members. And make sure you check out what the others are doing, too. You'll probably have questions of your own for them. You can learn a lot. And you can teach a lot. I'm looking forward to it.

In September, we will hold our semi-annual kit auction to finance the club treasury. Once again, we thank our donors in advance and remind the members that the auctions are the only means of revenue we have to keep this club going. As we no longer charge dues and membership is permanent for all who choose it, the club doesn't ask much of its members. Participation in club meetings is all we ask, and you're always welcome to bring in your latest models to display. So just to make sure our usual expenses are covered, bring your wallets and checkbooks (sorry, no charge cards or PayPal) to the September 14th meeting!

— Paul Boyer

Upcoming Events Compiled by Jim Erfert

August 1-4 • Phoenix, AZ

IPMS/USA National Convention 2018, Phoenix Convention Center, Phoenix, AZ 100 N. 3rd St, Phoenix, AZ, 85004

August 2-12 • West Allis, WI

Wisconsin State Fair!

August 5 • Crystal Lake, IL

IPMS/GTR NNL Contest & Swap meet. 9:00 am - 2:00 pm at the Algonquin Township building, 3702 US Hwy 14, Crystal Lake, IL 60014. Admission \$10. Contact: SteveJahnke@comcast.net for more info.

August 11 • Salem, VA

2018 Virginia Shootout. Salem Civic Center, 9:00am to 4:00pm EDT. 1001 Roanoke Blvd., Salem, VA, 24153, Greg Clower, gclower@aol.com

August 25 • Hunysville, AL

42nd Annual Model Show. Huntsville Jaycees Community Building, 8:00am to 4:00pm CD, 2180 Airport Road, Huntsville, AL, 35801 Skip Hassler, skipphas@comcast.net

August 25 • Liberty, MO

2018 Modelfest. Liberty Christian Fellowship Church, 1815 W Liberty Dr, Liberty, MO, 64068. 9:00am to 5:00pm CDT. Chris Searing, cdsearing@gmail.com

September 8 • Port Clinton, OH

TOL-CON 2018, Liberty Aviation Museum, 3515 E. Stata Rd, Port Clinton, OH, 43452 Phil Palmer, palmerphilip@msn.com

September 21-23 • Rockford, IL

WW2 reenactment 6799 Guiford road Midway village museum Rockford IL.

September 29-30 • Greenbush, WI

Civil war re enactment at the Wade House Historical site.

September 28-30 • West Allis, WI

Maker Faire, Wisconsin State Fair Park, <https://milwaukee.makerfaire.com/>

November 3 • Oshkosh, WI

21st Annual Winnebago Area Model Classic & Swap Meet. Oshkosh Hilton Garden Inn, Exit 116 East from Interstate 41. For More Information Call Don Molitor 920-420-1430 email WAMClassic@gmail.com Website WAMClassic.wix.com/wamc

January 19, 2019 • Darien, IL

Planes, Trains and Automobiles Plastic Model Kit & Model Railroad Swap Meet and Show Saint John Lutheran Church, 7214 Cass Ave. Darien, IL, 60561. 9 am to 3 pm, Approximately 6 blocks S. Of I-55 and Cass exit.

Flyers w/maps for these events are sometimes available at the general meetings or by calling me. Please take copies only if you plan to attend. The IPMS/USA website has info on most of these events. Check it out.

Jones' Thoughts by Al Jones

Very enjoyable meeting last month. The auction of Doc's kits went well. Thanks to all the guys who bought kits.

All of us are hoping that Paul's 2nd stint in the hospital comes out better than the 1st. Hang in there, Paul.

The 11th Annual GTR Summer NNL is coming soon, Sunday August 5. at the Algonquin Township Building in Crystal Lake IL. Car guys should have this one on their calendars. I have a copy of the contest flyer that I can send via email to anyone who requests it.

I have boxes and boxes of Doc Funcke's model kits for auction. My plan is to bring one of those boxes to the August meeting, keeping in mind that a substitute auctioneer may be required.

Then, with regard to model building, I got a neat reminder of model building back 10-15 years ago this week. I found an open kit box in a stack under my building table last weekend and decided to work on it. The kit is Hasegawa's 1/48th scale Kawasaki Ki61-I Tei Type 3 Fighter Hein (Tony) '56th Flight Regiment', Box No. 09412. The kit comes with markings for four different aircraft: a blotch camo version, a bare metal version, an olive green version (all of these aircraft were flown by 244th Sentai (Fighter Group) Capt. Teruhiko Kobayashi in 1945. The last set of markings has no description and is illustrated only on the box cover. Of course, I'm replicating the box art. I have discovered two issues while working on this model. The first is the fact that after doing the interior and assembling the airframe, I find that the prop spinner is missing from the kit. That explains the open unassembled kit. Build a spinner from scratch? . . . Maybe.

The 2nd issue is with the paint. The instructions call for IJA Green for the exterior color. Now, I have maybe 50-75 bottles of Floquil Military colors including a whole set of Japanese WW2 colors including IJA Green. It has been years since I've used any of these paints; but it would be NEAT to use them again, right? So, I grabbed the IJA Green bottle and proceeded to shake shake shake. The pigment came off the bottom of the bottle with no problems. Looking at the paint in the bottle, it looks to be kind of a dark tan with perhaps just a hint of green.

With the airframe assembled, I fired up the compressor and proceeded to airbrush all of the upper surfaces. The finish was smooth, even, and was the color as I described above. I set the model aside to

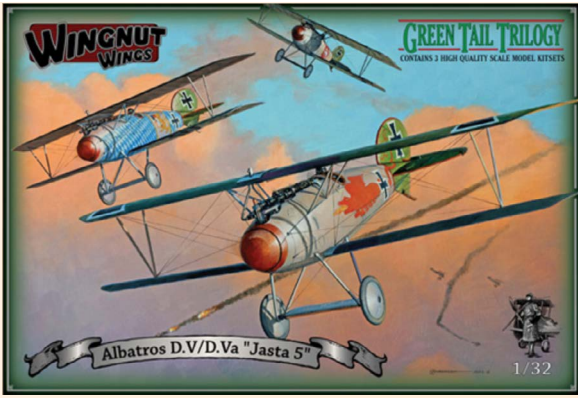
dry; and when I came back for a look the next morning, I found an olive green model. The color changed noticeably over night. Then I remembered having the same experience with this paint years ago. Now, I am going to try to show you what I saw with a photograph.



OK! I'm pretty happy with these photos taken outside at 12:50 p.m. on Sunday, July 29 (mostly cloudy with some blue sky showing). The material under the model is an old motorcycle cover that probably belongs to Chris Oglesby. The wing on the right is freshly painted. The rest of the model was painted yesterday. Tomorrow, the right wing will look just like the rest of the model.

Are we having fun yet??? It is possible that this model will be on display at our August general meeting. Let me know what you think.

—AJ



Ed VanBrabant



The Trilogy Connection August Update

Things have slowed a little bit, I was gone to the great north woods for a weekend with some family business and Sunday we all went to the town of Lannon for a car show, "Cars on Main" with all manner of street rods, muscle cars and customs. They even had a couple of nitro burning drag cars that they fired up, way cool!

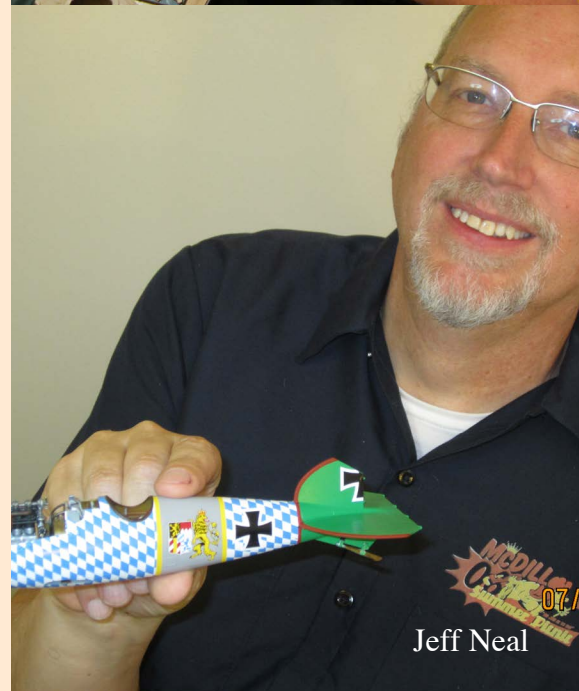
A couple weeks ago we had a fourth for the build (does that make it a quadrology?). New Bong club member Dennis Tennant came over and brought along a Tank to work on. I'm still trying to figure out where the props go?

I have some time off later this week and we are going to try to make up for some lost modelling time. We'll keep you posted.

—Jim



Dennis Tennant



Jeff Neal

Secretary's Notes by John Plzak

Seven members were present at the July business meeting. President Paul Boyer was again not able to attend. While a coup was mentioned there was even less enthusiasm for it than last month. The main topic of the night was the logistics of handling the auctioning of Doc Funke's kits. With the agenda set for the rest of the years meetings, there was little else to discuss.

The August meeting will be a build it at the meeting event. Bring a kit and some tools and spend a few hours working on a kit. It's great to see how everyone works and some of the tools they use. Plan to spend some time walking around and see how some of the other members build. Just because we don't have a display theme for this month doesn't mean you shouldn't bring anything to display. Lets fill the display tables anyway. Also hopefully Al will remember to bring his Fujimi kits this month. We'll also probably auction off another box of kits from the good Doctor.

Speaking of displays everyone I talked to was really impressed with Paul's display of almost 100 aircraft of US WWII aircraft. The display is des-

igned to end up at the EAA Airventure Museum in Oshkosh.

We should have our second club auction at the September meeting. Start saving you pennies and dimes now. There are always great buys at these auctions.

That's it for this month. Even though we are in the dog days of summer, try and get a little bench time in (air conditioning helps). See you at the meeting.

— JP

2018 Meeting Schedule

Aug	Build it at the Meeting
Sep	Club Auction
Oct	Officer Nomination, BOC night
Nov	Annual Contest
Dec	Christmas Party, Awards Presentation

Ed's Car Corner by Ed Doering



Kit Number 24232-1600

Tamiya Porsche 956 (Canon 1985)

Scale 1/24 Skill Level 3

From the years 1982-1985, Porsche enjoyed a virtual domination of world championship endurance racing including the famous 24 Hours of Lemans. The flagship of the German company - the Porsche 956, was developed to meet the regulations of the Group C category, which was established by FISA in 1982.

Its powerplant was a flat, boxer 6-cylinder, four-valve, dual turbo engine with air-cooled cylinders but water cooled cylinder heads, and four overhead cam shafts with timing gear. It developed 2649cc and put out an impressive 620 horsepower at 8200 rpm, providing a top speed in excess of 350kmh on the famous Mulsanne Straight.

The fully electronic optimum performance Bosch fuel injection system and 99 liter safety fuel tank ensured efficient running in long distance races. This car also featured a simple chassis construction and Porsche's first aluminum monocoque design.

This frame was assembled with rivets and glue, the bulk head and cross member were made of folded aluminum. The overall length of the 956 was 4800mm, and the overall width was 200mm, the maximum dimensions for Group C vehicles, its weight was 820kg.

The Porsche 956 was not only raced by Porsche's

factory works teams, but beginning in 1983, these superlative machines were being supplied to various private teams around the world.

One of those cars belonged to Richard Lloyd Racing, and sported the brilliant red and white livery of its main sponsor – Canon Cameras. This 956 was entered in the 1985 24 Hours of Lemans, where it achieved an overall result of finishing second. If it were not for some untimely computer trouble during the race, Richard Lloyd Racing's 956 would surely have crossed the finish line first.

I must admit that this is a very impressive kit, perhaps Tamiya's finest Porsche kit in 1/24 scale. The kit comes in the usual rectangular, tray type flat box, with colorful depictions of the Canon Porsche, which can aid you in decal placement.

There are two grey plastic trees, containing wheels, interior parts, engine, brakes, instrument panel, seat, bulkheads and some suspension parts.

Also included is a large white tree with the chassis pan, rear underside tail piece, rear wing, wheel covers, wing supports, headlamp mounts, and front suspension pan piece. All these trees are virtually flash free, and come bagged.

There is a separate bag for the clear glass pieces.

The body is separately bagged, and the front and rear body sections are linked via a centered bit of sprue. One thus has to decide whether to paint the two body sections with the sprue attached to both halves, or cut the two body sections free, and devise a way of holding them for painting. If you leave the sprue attached, you will get a much more even paint job than separating the sections, but... you'll need to sand the areas where the sprue was attached, and touch-up those areas. **CARE MUST BE TAKEN** when sanding the attachment points so that your two body sections will line up well to display the completed model with both body sections on the frame. I found a very slight gap between the back of the forward body section, and the section that covers the engine and rear suspension. Both body sections are molded in white, and had no mold seams, and were flash free.

There is also a small bag containing the 4 racing slicks. They can be enhanced via light sanding, to give them a raced on look. The tire bag also holds the 4 polycaps needed to hold the wheels on the axles, so take measures not to lose them.

Before assembly begins, it's wise to paint all the parts to the kit. This speeds up assembly, as well as provides a base color to each part upon which to add additional detail painting. It should be noted that part C-10, the central engine block, gets the top part of the piece painted in red. Rather than attempt to mask off just the top portion, I found it

easier to paint the entire part red, because once the part is added to make up the engine, the sides are neatly covered by the cylinder heads.

The frame pan gets a lot of masking off for the various colors called out. For those not wishing to do all the required masking off, one can just shoot the overall chassis pan in one color, top and bottom.

The inside of the body is to be painted in a flat black color. However, the body has tunnels both fore and aft, and I found it difficult to keep upper color paint from entering these tunnel areas. So, instead I just painted the inner and outer areas of both body pieces in upper body color. It may not be accurate, but for me, it was much easier to accomplish.

The instruction booklet is the usual fold out type, with a history of the car on the front cover page. Page 2 contains a list of all the paints needed for this model, which can readily be found in Metalizer colors etc. at any good hobby outlet.

TAKE NOTE that the exhaust pipes are molded into the upper side of the frame pan. More on this in a minute.

After the frame pan's been painted, and set aside to dry, the first of 17 assembly blocks begins with the flat 6 boxer engine. **CARE MUST** be taken to align parts C-5 and C-6 together perfectly. There can be no high or low sides, or the rest of the engine parts will not fit properly, so take you time to insure these parts line up with a perfect central seam.

Also in step 2, be **SURE** to get the forward pin attached to part C-5, to fit all the way up into part C-10, or the motor will not align well onto the frame pan. Also, insure that the bulkhead, part C-4 fits deeply into its slot on the attached parts C-5 and C-6 that you aligned well. Then, Part C-7, the trellis for the rear suspension, **MUST** sit all the way down onto the slotted area on the transmission, so that when additional rear suspension pieces are added, they align perfectly, especially the parts that the wheels and tires will attach to, to insure your wheels and tires sit flat on your work table – **VERY IMPORTANT!**

After detail painting the shock bar, it **HAS** to be set into the slotted area of the bulkhead, part C-4, and the ends of the shock bar must touch the locator points on part C-7. This is accomplished in step 3.

Moving to step 4, the exhaust pipes and turbos are mated up. **CARE MUST** be taken to get these parts assembled correctly, so that when they are added to the completed motor, the molded-in exhaust pipes on the frame pan will align with the cylinder heads, and your turbos etc. will be aligned correctly. **TEST FIT** a lot, until you are satisfied everything lines up a-ok.

In step 5, inner plates, parts C-17 and C-18, are attached to the sides of the intercoolers on the

bulkhead part C-13. They **MUST** be added correctly, to insure that the twin nozzles of part C-2 will align with the intercoolers. Take your time!

When the turbos and exhausts you accomplished in step 4 are dry, they get inserted into the side pieces of the intercoolers. Then, when all that's dry, you should add the bulkhead with the intercoolers done to the interior piece part B-5. The rear bulkhead sits on a shelf of part B-5. Be sure it aligns with even space on both sides, & that it sits squarely on the shelf of part B-5.

The seat gets belt decals, which should be placed so that the upper areas of the shoulder harness meet the two holes near the headrest on the seat. Then the seat is added to the interior along with the shifter mechanism.

That all done, the completed and dry interior and bulkheads, with the turbos etc. attached should be test fitted onto the frame pan, and **BE SURE** to align the turbos and exhausts to mate with the molded on exhaust pipes.

THEN IT IS CRITICAL to take the forward body section, place it over the interior and frame, and **INSURE THAT** the exhaust pipes on the turbos pass thru the outlet holes on the sides of the forward body section, so that the exhausts are centered in the exit holes. This is **CRITICAL** for allowing the forward body section to be removed, while keeping the turbos and exhaust pipes aligned in proper position. This is all done in step 5.

In step 6, the rear axles and brakes are assembled. Be sure to use the polycaps, and get the halves of the brake mounting areas on the axles aligned perfectly, so that the brakes will insert well into their mounting areas. The completed and dry axle/brake assemblies are then passed thru holes in the rear of the chassis pan, and the wishbone is added into its slot, with the ends of the wishbones sitting upon pins on the tops of the brake carriers.

In step 7, the front brakes, polycaps and brake carriers are assembled.

In step 8, the front shocks are attached into slots in the forward part of the frame pan. Then, the front suspension pan piece is attached, being sure that the upper control arms are centered over the bottom control arms on part A-5. When aligned right, and dry, the front brakes are inserted into the holes provided in the upper and lower control arms, and the tie rod is inserted. Do **NOT** glue the tie rod, to allow for pose-able front wheels/tires.

The wheel/tire assemblies are created in block 9, and the aerodynamic wheel covers are added.

In step 10, the wheel/tires are added, and the oil tank and support bars, part B-18 are added, with the forward pins on the support bars mating into

notches on the rear bulkhead. **BE SURE** this part seats well with the bulkhead before placing the air cleaners part C-2, **OVER** the support bars. Then, **MAKE SURE** the nozzles on the air cleaners align with the intercoolers.

Decal gauges are included for the dash, and should be applied in step 11. When dry, the steering column box and steering wheel are added.

Step 12 concerns the headlamps. Detail painting is required here for the lamp bases. Clear lenses are provided, which should be attached with a glue for clear parts.

In step 13, the areas on the front fenders get masked off where the headlamps will be inserted. Use any flat black color for this. Additionally, the red decal for the rear wing gets applied, as well as decals for the side fins.

Using the masks given in the kit, the windows are taped off, and the window frames shot in flat black in step 14.

In step 15, the front red tow hook is inserted into its slot in the nose of the front body section, the instrument panel and steering wheel are added, as well as the refueling nozzles, and a small tank. Be sure the fuel nozzles are centered in the holes in the forward body piece, and have the seams removed. Then the completed headlamps are inserted.

In block 16, the under tail piece gets added to the rear section of the body, and the tail lights get painted and then installed.

In final step 17, the windshield wiper is added, the clear lenses over the headlamp areas are installed being sure to use a glue intended for clear parts. The forward body section is then slightly spread to allow it to fit over the frame pan, insuring your turbo exhaust pipes come thru the holes on the sides of the forward body section.

Then, the 2 side rear view mirrors are added, along with the rear wing supports, and the rear wing itself. This completes the model, except for decals, and there is a decal placement guide included on the back page of the instructions, and the box art can aid you as well. The decals include all the red areas of the car, all you need do is paint the body sections white. The decals are Cartograph.

In addition to the Canon version of the Tamiya Porsche 956, there are kits available to do the Rothmans, Kenwood, and Newman cars. One can also hunt for numerous other liveries on the NET or thru Ebay for many different cars.

If you take your time, and pay attention to how things fit you should have little trouble in assembling this Skill Level 3 excellent Porsche kit – one of Tamiya's BEST. Grab one, and have fun with it.

—ED

“Ed’s Car Corner” (cont.)

Products review

Holmes True HEPA Allergin & Dust Remover, Micromark Fold-up Spray Booth, and BONDO tack clothes.

I’m sure all of us modelers are constantly battling the relentless dust that gathers in our work area and especially in our paint area. It’s a very REAL problem, and recently I’ve had to deal with dust bits in my paint jobs.

How do you eliminate this ever present dust problem?

Through trial & error, I have made the situation a bit more bearable by doing some simple preparation, and by using some good products.

My spray area is quite small in the back den of the house I share with Al Jones. I live on the bottom floor, and while the den’s small, I have been able to set up and use a small, fold-up spray booth offered by Micromark. You can find this spray booth on page 37 of their recent catalog.

This fold-up spray booth is ideal for any compact workshop such as mine. I have the unit set up to vent paint spray out a window in the den, quick and easy.

The unit is very light weight, only 7 pounds, and offers complete portability. The unit measures just 16 inches wide, by 8 inches high, and 6 inches deep when it is folded for very easy storage, although I keep my spray booth static and in the fully open position in the area of the window in the den. The unit unfolds in minutes to reveal a large 16 inches wide by 13 inches high by 15 inches deep work area.

It comes with a power-packed DC fan, which has 1/3 more airflow than AC equipped units. A filter is included for trapping over spray, and replaceable filters are easy to acquire thru Micromark. You can also add a duct to exhaust annoying fumes. The unit’s made of very durable plastic, with a metal fan grill, and rubber feet. The unit I have sells for \$99.95, and is model number #86104. The duct for the unit is #86105, while replacement filters are 86106.

I have used this spray booth for nearly a year, and have had virtually no problems with it. The spray area is big enough for me to paint model cars of 1/25 scale or larger.

Before I tackle any spraying, I place fresh newspaper on my work table, and use a paint stand to hold the model while I spray. Then, thru reading numerous on-line model car forums, I have discovered that if you fill an old spray bottle with water, you can mist your paint area to hold down any dust in the air. The model should NOT be in your work area when you mist the spray area, so that no water lands on your model.

Then, I completely wash and scrub the model parts with an old tooth brush, and a good degreaser to remove any mold release agents. I use FANTASTIC which is available at any outlet that sells cleaning products. I then completely rinse the model with warm water, and set the model in a dust free area to air dry.

I also have been using an allergen and dust remover. I have the HOLMES unit #HAP706. This machine utilizes an ionizer, and true HEPA filter to extract dust particles etc. from the air. The unit can be set on high, medium or low settings. I keep mine on the medium setting, and run the unit in the spray area 24 hours per day.

Recently, I’ve discovered the unit does make a difference in extracting dust. My paint jobs are coming out a lot better than when I did not have this unit.

Through more on-line forums, I’ve discovered it’s a GOOD idea to purchase tack cloths to wipe down your model before painting. BONDO makes them, as well as other companies. They are readily available at stores like Target, Walmart, Home Depot or paint stores.

Using the paint booth, HOLMES dust extractor, and tack clothes, today I got a really GOOD paint job with very minimal dust specks, which can easily be wet sanded out.

I have found that using these units and products makes a huge difference. It’s well worth the investment, and the products last a long time.

—ED

There were 32 model Information cards filled out. Please make sure you fill out the Model Information cards. **Please fill them out clearly.** I enter what I can read and my eyes aren't what they used to be. **Also please leave them on the display table.** The format of this list is: Modelers name, Item being displayed, Kit Manufacturer and Scale.

Editors Note: In an effort to show more club models I have added more pages of finished models. If you do not see your model it is because I could not see the name card associated with the model in the photo.

- Vic Rood** 34 Ford Coupe Revell 1/25
- Doug Chaltry** Re 2001 Italeri 1/72, Fiat G.50 Hasegawa 1/48, S81 Pipistrello Supermodel 1/72
- Al Jones** F4-J Phantom II Zoukei-Mura 1/48, P-51D-30-NT Revell 1/48
- John Frevele** 1948 Ford Coupe Revell 1/25, 1929 Ford Model "A" AMT 1/25, 1934 Ford Custom Stake AMT 1/25
- Ethan Smith** N1K2-J George Tamiya 1/50, F-104C Hasegawa 1/48
- Jeff Neal** F4F-4 Wildcat Tamiya 1/48
- Pat Hahn** (FR) AMX 30 Heller 1/76
- Mike Klessig** Lotus 49B Ebbro 1/20
- Paul Johnston** Porsche 944 Turbo cup '87 Hasegawa 1/24
- Jay Wichmann** "Death of the Red Baron" Revell 1/150
- Andy Keyes** P-63E Dora Wings 1/48, (2) Sea Fury Hobby Craft 1/48, Sea Fury Airfix 1/48
- Joe Frischmann** M42 Duster Tamiya 1/35, Pershing Tamiya 1/35
- John Clancy** Seversky Bt-8 Kampfflieger 1/72, German Battlefield Tinchik 1/50, Swift Boat Murphy's Models 1/65
- Walt Fink** N.A AJ-2 Savage Mach Two 1/72
- Phil Pignataro** Bristol Britannia Roden 1/144 (WIP)

- Art Giovannoni** F6F-5K Hellcat Hasegawa 1/72, F6F-5 Hellcat Hasegawa 1/72
- Jeff LaMott** Godzilla Flintstone 1/4, Creature Shifter Flintstone 1/4, Riddler Mobius 1/8



Doug Chaltry Re 2001 Italeri 1/72



Doug Chaltry Fiat G.50 Hasegawa 1/48



Jeff Neal F4F-4 Wildcat Tamiya 1/48



Ethan Smith F-104C Hasegawa 1/48



Ethan Smith N1K2-J George Tamiya 1/50



Al Jones F4-J Phantom II Zoukei-Mura 1/48



Doug Chaltry S81 Pipistrello Supermodel 1/72



Art Giovannoni F6F-5K Hellcat Hasegawa 1/72



Phil Pignataro Bristol Britannia Roden 1/144 (WIP)



Walt Fink N.A. AJ-2 Savage Mach Two 1/72



John Clancy Seversky Bt-8 Kampfflieger 1/72



Andy Keyes Sea Fury Airfix 1/48



Andy Keys Sea Fury Hobby Craft 1/48



Andy Keys Sea Fury Hobby Craft 1/48



Andy Keys P-63E Dora Wings 1/48



Art Giovannoni F6F-5 Hellcat Hasegawa 1/72
Grumman F6F-5 "Hellcat"
Cmdr. David McCampbell, CA -
USS Essex Oct. 10
Hasagwa 1-



Al Jones P-51D-30-NT Revell 1/48



Joe Frischmann M42 Duster Tamiya 1/35



Joe Frischmann Pershing Tamiya 1/35



John Frevele 1929 Ford Model "A" AMT 1/25,



John Frevele 1948 Ford Coupe Revell 1/25



Paul Johnston Porsche 944 Turbo cup '87 Hasegawa 1/24



Mike Klessig Lotus 49B Ebbro 1/20



Vic Road 34 Ford Coupe Revell 1/25



John Clancy German Battlefield Tinchik 1/50



Jay Wichmann "Death of the Red Baron" Revell 1/150



John Clancy Swift Boat Murphy's Models 1/65



John Frevele 1934 Ford Custom Stake AMT 1/25



Jeff LaMott Riddler Mobius 1/8



Jeff LaMott Creature Shifter Flintstone 1/4



Jeff LaMott Godzilla Flintstone 1/4



Jim Bellinger

Jim Bellinger was spotted working at Cabela's and says "Hi" to all club members.



BADGER MILITARY COLLECTIBLES SHOW

August 3 & 4, 2018

WAUKESHA EXPO FORUM

1000 Northview Road, Waukesha, WI 53188

U.S. & FOREIGN

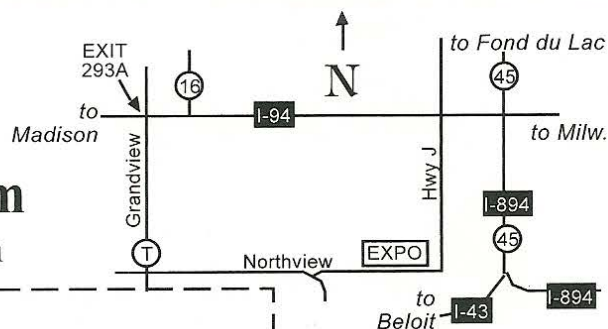
Civil War • WWI • WWII • Korea • Vietnam • Desert Storm
BUY • SELL • TRADE • FREE APPRAISALS • PUBLIC INVITED

ADMISSION \$7⁰⁰

HOURS:

Friday 3-8 pm • Saturday 9 am - 4 pm

Vendor Setup: Thurs. 4-8 pm, Fri. 8-3 pm, Sat. 7:30-9 am



**FREE
PARKING**

ADMISSION \$7
 Children 14 &
 under Free

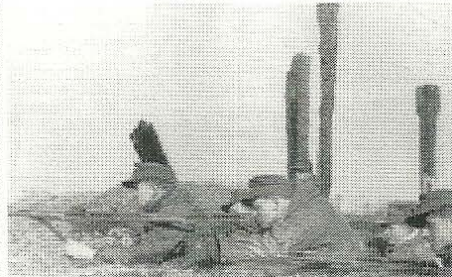
Send Check with reservation to:
 BADGER MILITARY SHOW, 1111 W. Delavan Dr., Janesville, WI 53546
 1-608-752-6677

300 8' Tables • \$50 Fee/Table
 Waukesha Expo - August 5 & 6, 2016

Personal Name _____
 Address _____
 City, State, Zip _____
 Phone _____

Total Tables	Price/Table	Amount
<input type="text"/>	X <input type="text"/>	= \$ <input type="text"/>

2 Admission badges per group.
 Extra Admission badges \$50
 each. Admission badge needed
 for setup entry.





**11th Annual
IPMS/GTR NNL
Contest & Swap
Meet
August 5, 2018**

Theme: Crazy 8's - [any car associated with the number "8"]

Subtheme: Asian Invasion - [any Asian themed car]

The Summer NNL will be held on Sunday August 5th 2018 from 9:00AM to 2:00PM at the Algonquin Township Building, 3702 US Highway 14, Crystal Lake, Illinois 60014

Admission to the show is a measly 10 bucks; you can enter unlimited models and we will serve a pizza lunch (again, no additional charge, soda extra; sorry had to draw a line somewhere) to all show entrants.

Did we mention that there is a swap meet too? There will be a free "trunk sale" swap meet in our spacious parking lot, vendors and show goers are encouraged to open their trunks and sell-sell-sell rain or shine. Vendor set-up starts at 8:30AM. Also we raffle off some nice prizes.

Our NNL style contest bestows "Best Of" awards as mandated by popular vote as determined by show attendees, official judging and nit-picking is strictly forbidden, praise and admiration from fellow modelers strongly encouraged.

Classes:

Competition Open Wheel	All scales	F1, Indy, Drag, etc
Competition Closed Wheel	All scales	NASCAR, LeMans/IMSA, Can-Am, Drag
Street	All scales	Street legal - Muscle Cars, Sports/Exotics, Tuners, beaters, factory stock
Custom	All scales	Modified custom vehicles
Commercial	All scales	Trucks, Taxis, Police, Ambulance and Emergency
Motorcycles/ Miscellaneous Juniors	All scales	All types
	All scales	[Under 16 years] all models
Curbside	All scales, all types	Hood closed, judged as displayed, includes slammers
Out of the Box	All scales, all types	No modifications to the kit except filler, paint, decals and foil
Theme: Crazy 8's	All scales	
SubTheme: Asian invasion	All Scales	
Chris Ducey Memorial Award	All scales, Ford	Best Ford
Tim Leicht People's Choice Award	Best model in contest	

Contact: SteveJahnke@comcast.net
[GTR Auto Modelers Group page on Facebook](#)

MODELCLUB

A PROJECT OF WISCONSIN 4-H

RECIPIENTS OF A PRESIDENTIAL COMMENDATION FOR SERVICE TO
THE ARMED FORCES

RECOGNIZED BY THE US CONGRESS FOR COMMUNITY SERVICE

PRESENTS

THE 18TH ANNUAL LARRY PETERS CLASSIC MODEL ART SHOW

Presented In Association With Forensic Research Associates

“THE HAM SHOW”

SATURDAY OCTOBER 27, 2018

**OPERATION
BAGHDAD BEAVER**

2 FREE 1.00 RAFFLE
TICKETS FOR EACH
REGULAR MODEL KIT
DONATED

ALL MODELS RAISED
GO TO
ZABLOCKI VA HOSPITAL
REHABILITATION
DEPARTMENT AND
DOMICILIARY

LAKE LODGE MASONIC HALL
1235 E. HOWARD AVE.
MILWAUKEE, WI. 53207
(IN ALMOST MYTHICAL BAY VIEW)

REGISTRATION 9:00AM – 12 NOON
RAFFLE 2 PM
AWARDS 3 PM

SHOW JUDGED PER
MODIFIED CHICAGO RULES

ENTRY FEES

\$ 5.00 FOR THE 1ST MODEL
\$ 3.00 FOR SECOND MODEL
\$1.00 EACH FOR 3RD MODEL AND AFTER

SPECTATORS SUGGESTED DONATION \$ 1.00 PER PERSON
FIRE, POLICE, EMS AND ALL US MILITARY WITH ID AND ALL US MILITARY AS SPECTATORS FREE
All Lodge Members Free

**ALL MONEY RAISED WILL BE DONATED TO
THE RONALD MCDONALD HOUSE CHARITIES OF EASTERN**

WI.

ADULT GRAND CHAMPION PRIZE
A BUTT PORTION 1/2 BONE IN SMOKED HAM 6-8
LBS

ADULT RESERVE GRAND CHAMPION PRIZE
A 15 LB OR LARGER
TURKEY

JUNIORS GRAND CHAMPION
THE RICK TAYLOR AWARD

JUNIORS RESERVE GRAND CHAMPION
THE STEVE MALIA AWARD

THE ERIC ANDERSON AWARD
BEST HANDPAINTED MODEL AIRCRAFT

BILLY MITCHELL AWARD
BEST TWIN ENGINED BOMBER



See the coolest planes, jets, warbirds, helicopters, and things you never thought would fly ... FLY!

Food & Refreshments provided by the Boy Scouts

Parking - \$5.00 per car load

General Public and Pilot Raffle

\$5.00 Landing Fee for all pilots

Pilot registration starts at 8:30 AM

Discovery Flights!



Try your hand at flying an RC model aircraft with our Discovery Flights!

The Flying Electrons

in cooperation with

**Menomonee Falls
Boy Scout Troop 110**

Radio Control AirFest 2018

**Saturday, August 25th
9:00AM to 2:00PM**

(Rain Date: Sunday, August 26th)

***A portion of the proceeds go to benefit
Menomonee Falls Boy Scout Troop 110!***

**OPEN TO THE PUBLIC
Spectators Welcome!**

Huge Air Show at Noon!

Tamarack Airfield is located at
N61W17000 Kohler Lane, Menomonee Falls, WI

(Just behind the Frito-Lay Distribution Center)

To learn more about the Flying Electrons
log on to our website at:
www.FlyingElectrons.com

**Event Director: Cliff Evans Phone: (414) 378-5568 Email: cevans@wi.rr.com
www.FlyingElectrons.com**

(This is an Academy of Model Aeronautics Sanctioned Event # 1568)



Rubicon Area Flyers

Fun Fly 2018

August 11th, 2018

www.rubiconareaflyers.com

Bring the kids!!

Good Food Cheap, *flight simulators, RAFFLE!!!*

All planes are welcome, gas – glow – electric – any size – >

HUGE airplanes down to that teeny tiny park flyer, if it flies **BRING IT!!!**

(Along with your AMA Card)

Come out for a day of fun – (starts at 8am – 3?)

EVEN IF YOU DO NOT FLY!

Location: Rubicon Area Flyers Field

County Hwy “P” North from Highway 60

1.2 miles west of Rubicon on Hwy N. North side of the road

W1688 County Rd N, Rubicon, WI 53027

Cost: Why would we charge for this?

You can't put a price on fun!!!



Yak-54 Electric

RAFFLE PRIZES!!!!
You do NOT want to miss
our Raffle!
\$5/ea or \$20/5



THIS YEARS' prizes....



Please support our local Hobby Shop friends!

Model Empire

7116 W Greenfield Ave
West Allis, WI 53214-4708
(414) 453-4610
www.modelempireusa.net

HobbyTown USA

1704 S 108th St, Milwaukee, WI 53214
(414) 771-5215
htuwestallis@sbcglobal.net

Happy Hobby

7125 N 76th St
Milwaukee, WI 53223-5007
(414) 461-6013
www.happyhobby.com

see our other greater Milwaukee locations

Adventure Game & Hobby

248 Maple St
Waukesha, WI 53186
(262) 548-9177
www.adventuregamesplus.com

WANTED

Any and all model military kits. If you have come to the conclusion that you will never have time to build all of your kits, now is the time to turn those unwanted kits into cash. I'm a dealer that needs inventory for kit shows. I'm only interested in complete, unbuild examples. Thanks — Pete Gitzel

262-895-2975 home • grizzly3@wi.rr.com • 414-331-3339 cell

Military Collectibles Shop

9106 W. Greenfield Ave
West Allis, WI 53214
(414) 727-1190
militarycollectorsHQ.com

IPMS/USA MEMBERSHIP FORM

IPMS No.: _____ Name: _____
If Renewing First Middle Last

Address: _____

City: _____ State: _____ Zip: _____

Phone: _____ E-mail: _____

Signature (required by P.O.) _____

Type of Membership Adult, 1 Year: \$30 Adult, 2 Years: \$58 Adult, 3 Years: \$86

Junior (Under 18 Years) \$17 Family, 1 Year: \$35 (Adult + \$5, One Set Journals) How Many Cards? _____

Canada & Mexico: \$35 Other / Foreign: \$38 (Surface) Checks must be drawn on a US bank or international money order

Payment Method: Check Money Order

Chapter Affiliation, (if any): _____

If Recommended by an IPMS Member, Please List His / Her Name and Member Number:

Name: _____ IPMS No.: _____

IPMS/USA

Join or Renew Online at: www.ipmsusa.org

PO Box 56023

St. Petersburg, FL 33732-6023



Call Todd Augustine for a quote

email: taugustine@amfam.com

Tel: (414) 755-8890

Toll Free: (800) 692-6326

11616 W. North Ave Ste. D
Wauwatosa, WI 53226